

GROUND TEST

TECHNICAL SPECIFICATIONS

EXPLORA 140



OVERVIEW

The Explora is an Innovative Hydraulics Explora 140 mounted on a four wheel drive Hino 1322GT carrier truck. This high capacity rig is capable of carrying out a wide range of testing and sampling in deep geotechnical investigations, and has been specifically designed for mine related and remote area work.

CAPABILITIES

Drilling

- Solid flight augering to 15 m
- Hollow flight augering to 20 m
- 100mm Ø wash boring to 100 m
- ODEX (HW size) to 15 m
- NMLC coring to 70 m
- NQ wireline coring to 350 m
- HQ wireline coring to 250 m

Sampling

- Undisturbed (U_{50} , U_{63} , U_{75})
- Piston
- Well installation

In-situ testing

- Standard penetration (SPT)
- Packer (Lugeon)
- Shear vane
- Pressuremeter
- Cone Penetration (CPT) to 4.4 t thrust

OTHER FEATURES

- MDG15 mine compliance
- 600 L shared rig and carrier truck fuel for several days drilling
- Dump mast for angle drilling upto 45 degrees
- Mine compliant non-split steel rims with tubeless tyres
- Integral slinging points for craneage purposes
- High and low flow radial diaphragm

pumps

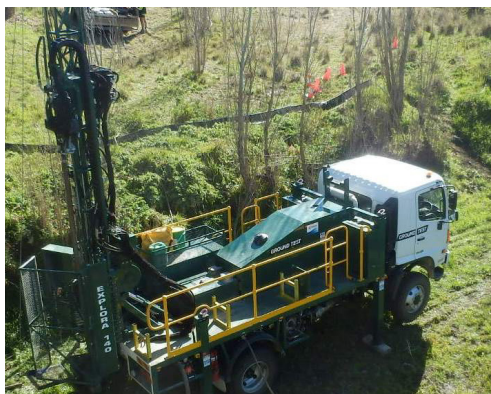
- Hydraulic 'make and break' clamp

SAFETY

- Safety cage with rotation isolation
- Dual pole battery isolation for rig and truck
- Rig engine 'watchdog' auto-shutdown
- Control panel and four jack leg mounted emergency stops
- Reverse alarm, spill kit, first aid kit and two fire extinguishers

BENEFITS

- High capacity and versatile rig suitable for large scale geotechnical investigations in remote areas.
- Good weight distribution and reduced rear overhang allows access on poor tracks and hilly terrain.
- Modern carrier truck and good weight distribution allows for efficient mobilisation to remote areas



RIG SUMMARY

DIMENSIONS

Width:	2.5 m
Length:	8.0 m
Weight:	11.5 t
Height, mast setup:	7.7 m
Height, mast down:	3.8 m
Work area length:	14.0 m

RIG SPECIFICATIONS

Engine:	6 cyl Caterpillar
Rotary drive:	Innovative 2 sp 560 rpm, 800 rpm
Winch lines:	1 main @ 2850 kg 5 w/line @ 725 kg
Pull down:	4400 kg
Pull back:	7000 kg
Head stroke:	3.3 m
Mast dump stroke:	2.0 m
Casing clamp:	Make and break
Breakout spanner:	As above
Jack legs:	Four (1.4 m and 1.8 m stroke)

CARRIER TRUCK SPECIFICATIONS

Make/Model:	Hino/1322GT 4x4
Wheels:	Steel, tubeless tyres

SUPPORT TRUCK SPECIFICATIONS

Make/Model:	Isuzu/NPR200 4x2
Wheels:	Steel, tubeless tyres

