

GROUND TEST

TECHNICAL SPECIFICATIONS SCOUT 4



OVERVIEW

Scout 4 is a Hydrapower Scout Mk V rig mounted on a four wheel drive Hino 1322GT carrier truck. This high capacity and powerful rig is capable of carrying out a wide range of testing and sampling in deep geotechnical investigations.

CAPABILITIES

Drilling

- Solid flight augering to 15 m
- Hollow flight augering to 20 m
- 100mm \varnothing wash boring to 100 m
- ODEX (HW size) to 15 m
- NMLC coring to 70 m
- NQ wireline coring to 350 m
- HQ wireline coring to 250 m

Sampling

- Undisturbed (U_{50} , U_{63} , U_{75})
- Piston
- Well installation

In-situ testing

- Standard penetration (SPT)
- Packer (Lugeon)
- Shear vane
- Pressuremeter
- Cone penetration (CPT) to 4.5 t thrust

OTHER FEATURES

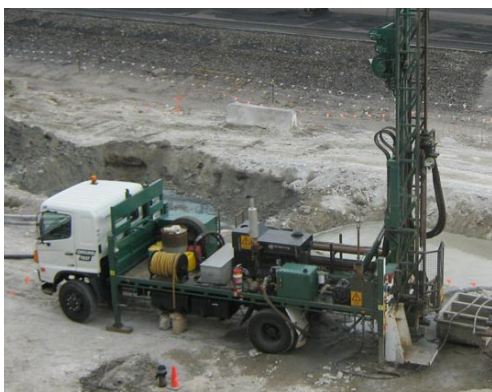
- 5.1 m head stroke
- Dump mast for angle drilling up to 45 $^{\circ}$
- High flow and low flow radial diaphragm pumps
- Hydraulic casing clamp/breakout spanner
- Hydraulic casing clamp/breakout spanner

SAFETY

- Safety cage with rotation isolation
- Dual pole battery isolation for rig and carrier truck
- Control panel and right jack leg mounted emergency stops
- Reverse alarm and reverse camera
- Spill kit, first aid kit and fire extinguisher
- Automatic SPT hammer

BENEFITS

- High capacity rig well suited to large scale geotechnical investigations
- Four wheel drive carrier truck allows access to remote sites with unsealed roads and other difficult or hilly terrain
- Efficient mobilisation to remote/regional areas



RIG SUMMARY

DIMENSIONS

Width:	2.5 m (excl mirrors)
Length, mast up:	8.3 m
Length, mast down:	10.5 m
Weight:	13.0 t
Height, mast up:	9.0 m
Height, mast split:	N/A
Height, mast down:	3.6 m
Work area length:	14.5 m

RIG SPECIFICATIONS

Engine:	6 cyl Cummins
Rotary drive:	Hydrapower 2 sp 150 rpm + 700 rpm
Winch lines:	1 main @ 4200 kg 3 w/line @ 780 kg
Pull down:	4500 kg
Pull back:	6500 kg
Head stroke:	5.1 m
Mast dump stroke:	1.8 m
Casing clamp:	Fixed, hydraulic
Breakout spanner:	Hydraulic Stilson
Jack legs:	Four (1.5 m stroke)

CARRIER TRUCK SPECIFICATIONS

Make/Model:	Isuzu/1322GT 4x4
Wheels:	Steel, tubed tyres

SUPPORT TRUCK SPECIFICATIONS

Make/Model:	Isuzu/NPR200 4x2
Wheels:	Steel, tubeless tyres

